

LANDKEY PUPIL PREMIUM ACTION PLAN 21-22 EVALUATION



Summary Information	
Total number of pupils	198
Number of PP-eligible pupils	24
Total PP budget (incl. CiC additional funding)	£32,493
Catch-Up funding	£2,610
School Led Tutoring	£2,227

Current Y6 Pupil Premium Attainment- % meeting the expected standard			
Cohort - 27 PPG - 5	% school PPG	% national other	Attainment gap
Combined reading, writing and maths	20	65	45
Reading	40	73	33
Writing	20	78	58
Maths	20	79	59

Barriers to learning
<p>A high percentage of our disadvantaged pupils have SEND (many of these pupils having multiple or complex needs). Many of our PP pupils start school in reception with poor speech and language. The performance of our disadvantaged pupils is not consistent across the school, they tend to do well in reception but then fail to maintain this across KS1.</p> <p>There is a wide gap between writing results compared to reading and maths.</p> <p>Our disadvantaged pupils can often present with low self-esteem and low aspirations and they do not always start school with the same rich and varied life experiences that their peers may have.</p> <p>There are a high percentage of pupils with social, emotional and mental health needs within this group.</p> <p>We tend to experience a high number of pupils joining the school part way through their primary education.</p> <p>Historically, we have small numbers of PP so the intervention and provision is planned to meet individual need.</p>



Summary of provision

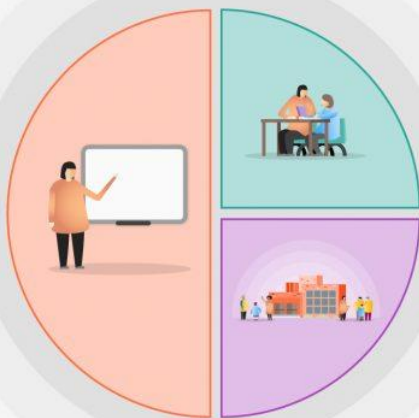
1 Teaching

Professional development

Support and training new members of staff and early career teachers

Coaching and mentoring for all staff

Training and support for curriculum leaders



2 Targeted academic support

Structured interventions – particularly focusing on SLCN, literacy and maths needs

Small group tuition

One to one support

3 Wider strategies

Social and emotional support /intervention

Extra-curricular opportunities and the embedding of our new curriculum that will include rich and meaningful learning opportunities that broaden the experiences of all pupils.



Priorities	Cost	Summary of provision	Outcome	Evaluation
Teaching				
Professional development	£2100	New SENCo – start SENCo award	To ensure the gap between children receiving the Pupil Premium Grant and all other children continues to close and the current level of achievement is at least maintained.	SENCo making a huge impact to families including PPG/disadvantaged. Training given to all staff to enhance high quality first teaching SEND judged as effective during recent OFSTED
Coaching and mentoring for all staff	£4200	Early reading weekly training for all reading team	Teaching is consistently good across the school and across the curriculum and all pupils make good progress.	Training took place both as a group most weeks (Covid dependent) and individually when appropriate. Early reading judged as effective during recent OFSTED. Phonics score – 79% (82% NAT) PP phonics score 50% (71%NAT) End of EYFS reading – 81% (76.9% NAT) End of EYFS PP reading – 100% End of KS1 reading – 62% (75% NAT) End of KS1 PP reading - /
Targeted academic support				
One to one support	£6200	Fresh Start intervention and RWI phonics intervention for those pupils not achieving ARE at end of KS1 or children falling behind.	Teachers and teaching assistants work together to plan effective intervention that helps to close gaps and improve progress.	All pupils (100%) made progress in reading Y3S - 4WTS Y3S - 4WTS 2WTS – 2EXS 2WTS – 2EXS
Training and support for curriculum leaders	£6,500	Mentoring and attachment training – relational behaviour	To develop the skill set of staff with the aim of having specialists in each area of SEND to support both pupils and staff.	Trust training ongoing. All members of staff will be trained in September

LANDKEY PUPIL PREMIUM ACTION PLAN 21-22 EVALUATION



Priorities	Cost	Summary of provision	Outcome	Evaluation
Small group tuition	£2,614	SLT (school-led tutoring – focus on writing, specific focused intervention based on individual needs. Class teachers to work with their own pupils	Teachers and teaching assistants work together to plan effective intervention that helps to close gaps and improve progress.	Results: All pupils that took part (22 pupils) made progress and achieved individual writing targets.
One to one support	£2800	RWI 1 to 1 tutoring (early reading)	Teachers and teaching assistants work together to plan effective intervention that helps to close gaps and improve progress.	RWI results: 81% of EYFS on track 62% of Y1 on track 23% (6 pupils) of Y2 not on track but all made at least 3 levels progress as a result of intervention
Wider strategies				
Extra-curricular opportunities and the embedding of our new curriculum that will include rich and meaningful learning opportunities that broaden the experiences of all pupils.	£3,000 (residential and trip spend)	All PPG pupils in Y4, Y5 and Y6 given opportunity to attend residential trip	To ensure that PPG have equal access to a varied and rich curriculum, offering a range of opportunities that may not otherwise be experienced. (including trips, residential trips, music tuition and sporting activities)	100% of PP children offered residential opportunity in Years 4, 5 and 6.
Social and emotional support /intervention	£7,000 (TA) £2,975.00 (Play Therapy)	Intervention for emotional needs	To ensure disadvantaged pupils social and emotional needs are met through the use of Thrive, Oasis club and mentoring	Intervention being delivered in small groups. 35 pupils have accessed this support to date Counsellor (CBT trained) worked with 4 pupils to date